

# Basic Instructions for Setting Up Your webcamXP For Streaming Over the Internet

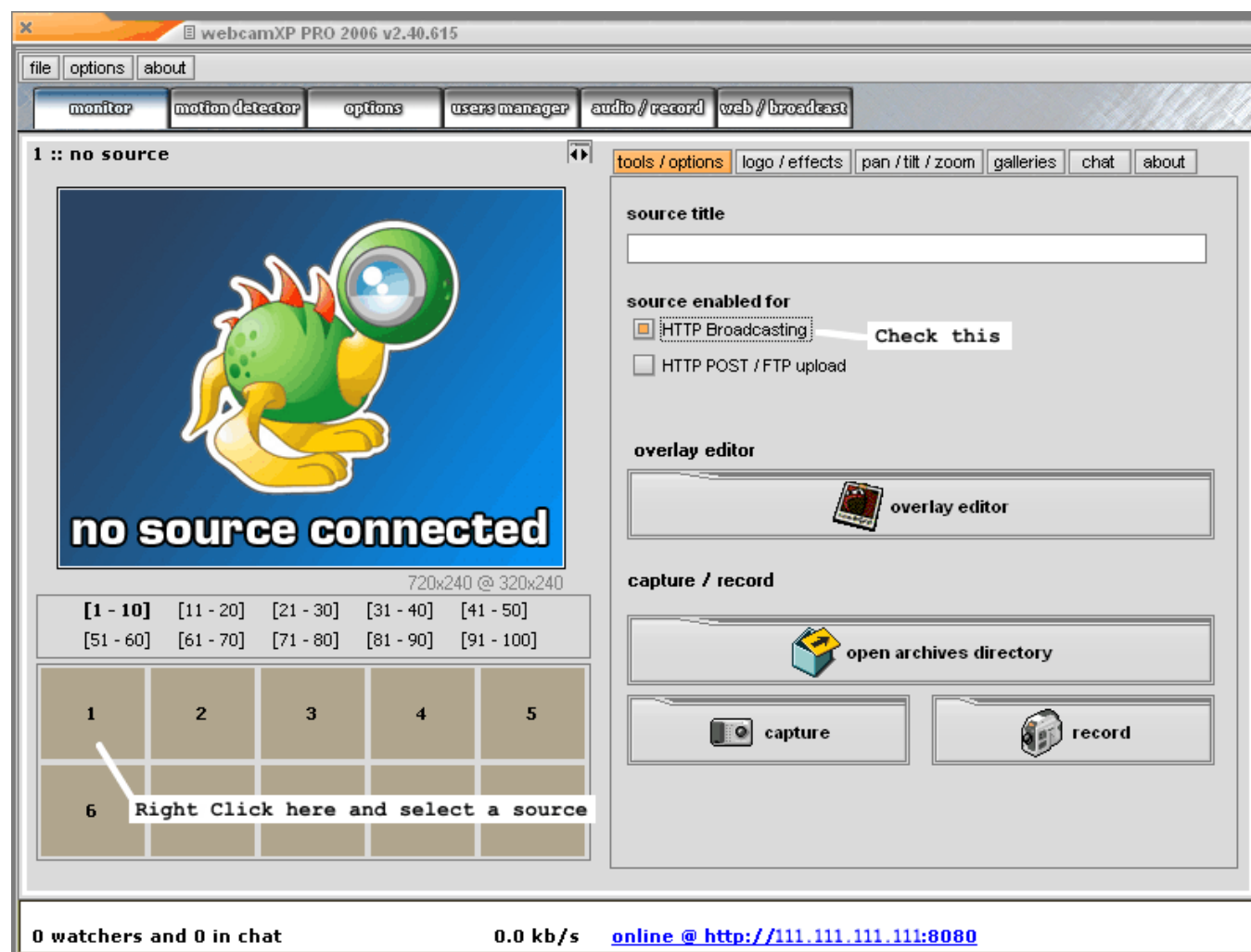
By Sabertooth

Follow these basic instructions to setup your webcamXP for http live streaming. Once you're broadcasting, you can go back and make adjustments to your liking.

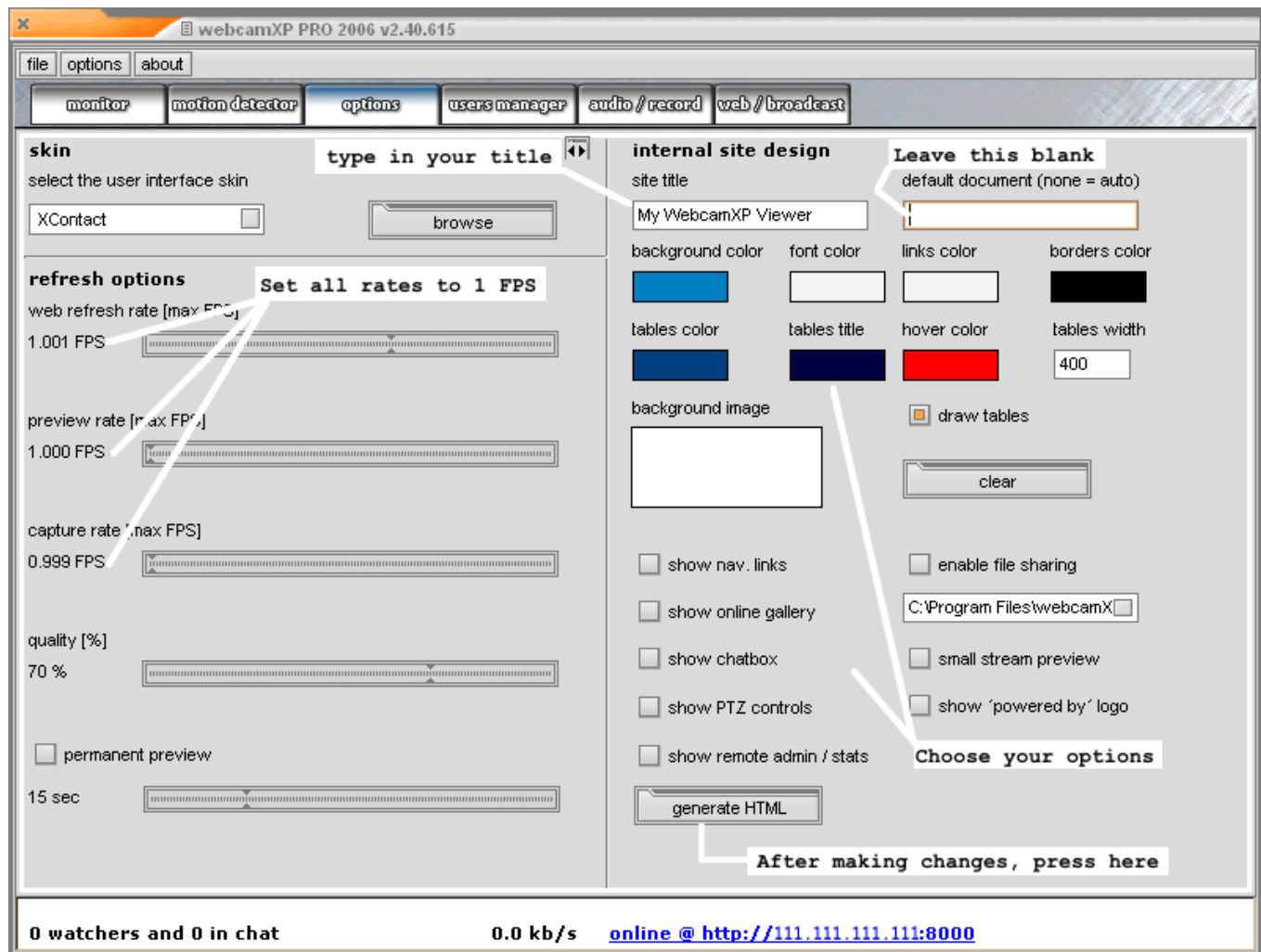
Note: The IP address in the examples is fictitious and will not lead to a webcamXP server.

1. Install the latest version available at <http://www.webcamxp.com/>. Be sure to check at <http://darkwet.net/> for the latest information.

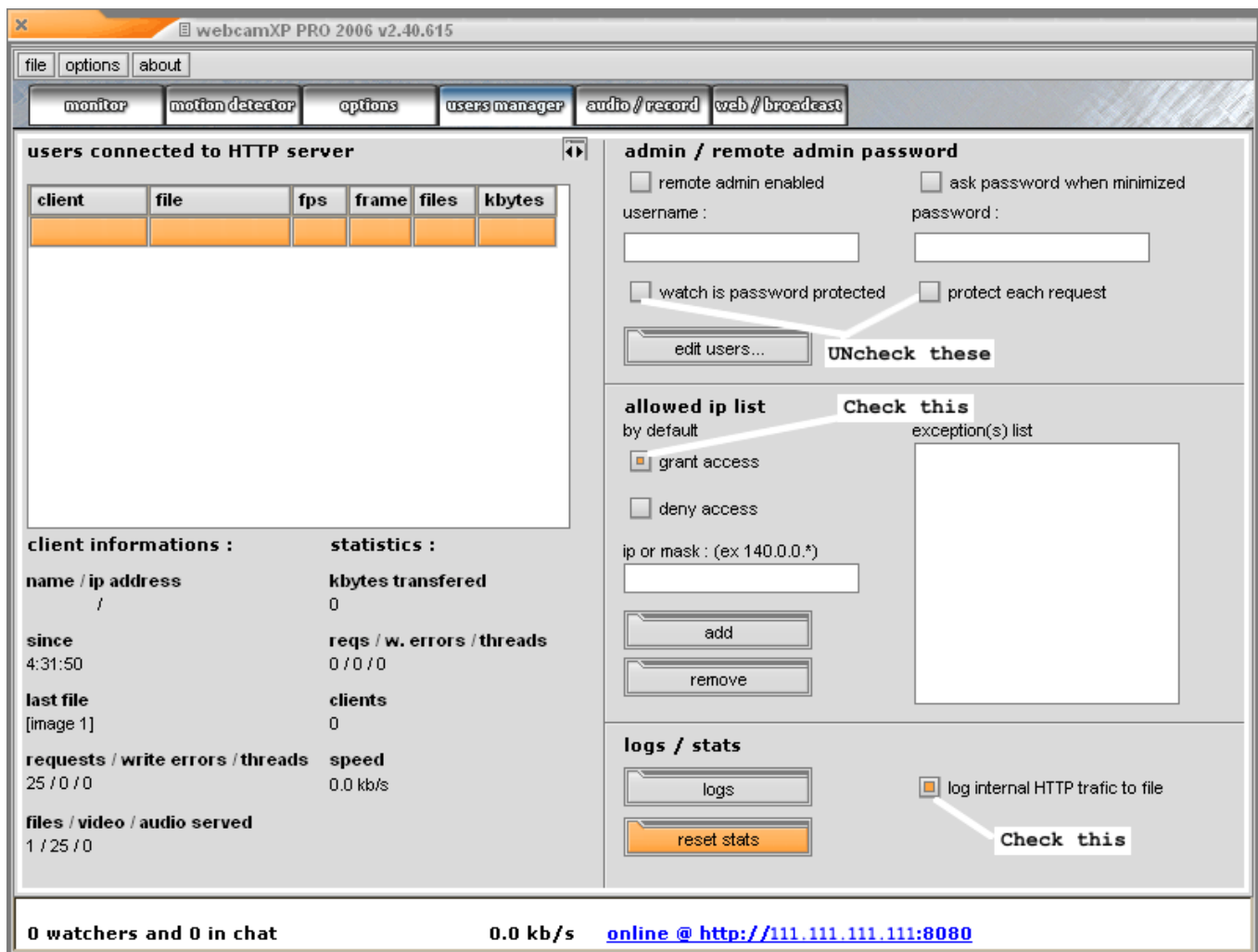
2. Connect a source. Near the bottom of the monitor tab of the webcamXP application, there are 10 numbered boxes. Right click on the first box (1) and from the menu that appears select 'Connect' and then from the submenu select a source. My cameras show up under directx video sources.



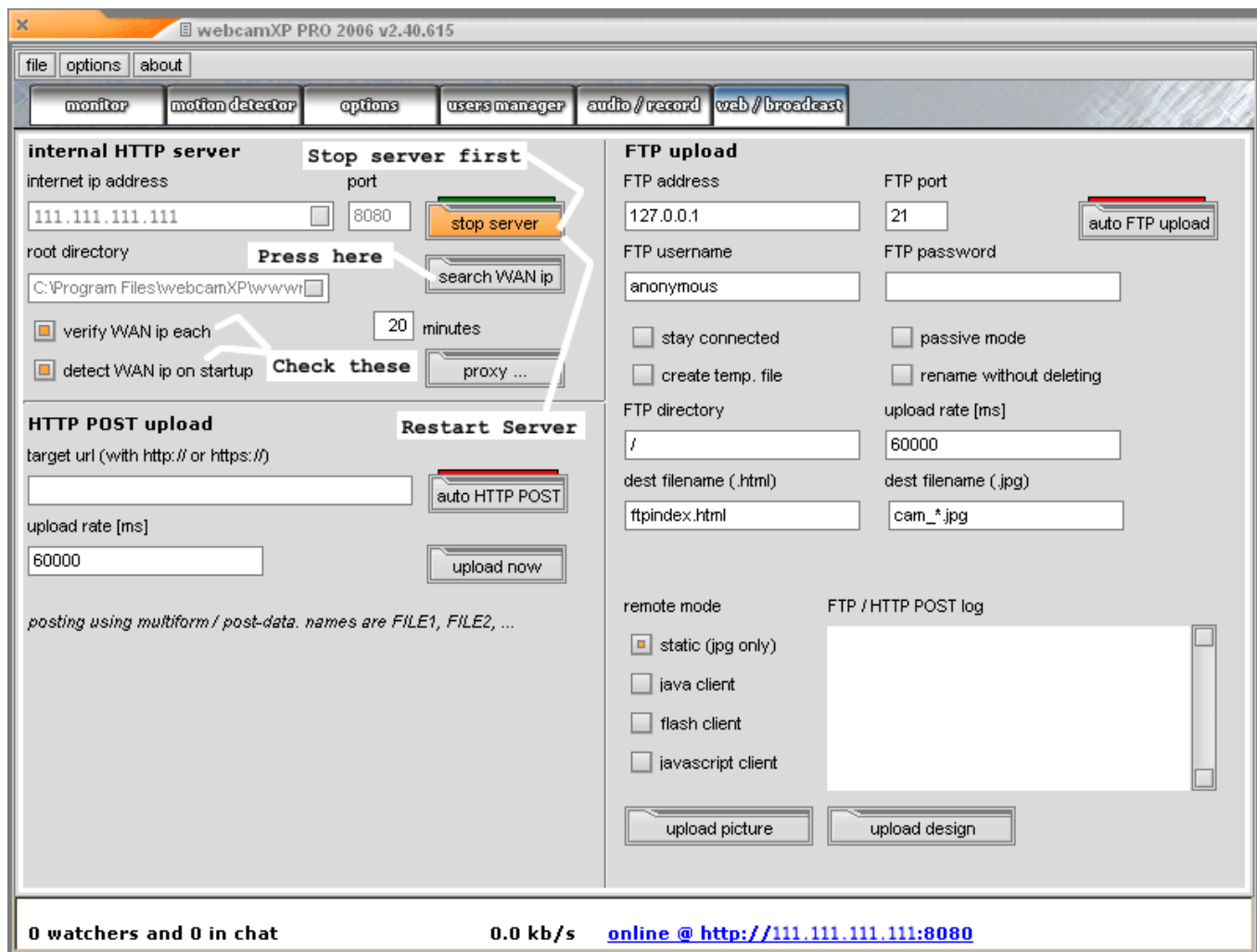
- On the right subpanel of the monitor tab, make sure HTTP Broadcasting is checked.
- Select the Options tab. For initial testing, we'll set some low frame rates. You can tweak these higher later on. There appears to be some interactivity between the different rates so you may need to play around with these some to get the best rates and quality for your situation. For now, set all the rates near 1 FPS (frame/sec). Leave the quality at 70% (or lower).



- On the right subpanel of the Options tab, set your color scheme by clicking on the colored boxes, set a title in the site title box. Check any features you want to be available, chat, navigation, gallery, etc. Make sure where it says 'default document' that there is \*nothing\* entered (the box must be empty).
- Click the 'Generate HTML' after you make your changes (and whenever you make changes on this page).
- On the Users Manager tab, on the right subpanel, make sure that 'watch is password protected' and 'protect each request' are not checked and, in the allowed ip list section, 'grant access' is checked. Check the 'log internal traffic to file' to create a log of connections to your server (recommended but not mandatory).



8. On the web/broadcast tab, click 'Stop Server'. Click 'search WAN IP'. If you do not have a fixed IP address through your ISP or you don't know if you do then check the 'Verify WAN IP each' and the 'detect WAN IP on startup'. If you use a proxy server, then press 'proxy' and enter the necessary information. Click 'start server'.



9. Note the '[online@](http://111.111.111.111:8080)' link on the bottom of the screen and write down the address shown (this address should be your server address on the internet). If the server is started and the path to the internet is open then you can click this link to open up your server page. If you get a 'page not found' error, then your firewall, your router or your ISP may be blocking.

10. To verify the server is actually up and running, use the local (internal) address to look at your server page. Open your Internet Explorer (or other) browser and type the following into the address bar:

<http://127.0.0.1:8080/>

This address does not leave your computer but still is useful to 'prove' the server is running.

11. Call your ISP and ask if they're port filtering (blocking). Some do, some don't. University networks are almost always closed. If they are blocking then there's not much you can do. If they block some ports but not others then type in a port they don't block in the Port box on the web/broadcast tab (be sure to stop the server first then restart it after making the change). Be sure you change the port number when you try to reach the server (i.e., <http://127.0.0.1:????>) and in any web pages you create too.

12. Your routers documentation may contain the information you need to configure port forwarding needed for webcamXP to work. You can also check at <http://www.portforward.com/routers.htm>. Scroll down to the list of routers by manufacturer and see if you can located yours. Click on it and then on the next page scroll down to locate webcamXP on the list of applications. This will provide fairly specific instructions for setting up your router to allow port 8080 through. You do not need to buy the software being hyped. In many cases, you will need to configure a static IP address. You can find instructions on how to do this here: <http://www.portforward.com/networking/staticip.htm>

If you have a router then your system will be configured so that your PC is connected through a local network to one side of the router. Each PC connected to the local network will receive an address, typically in the 192.168.??? address range. To determine your local address, open a command prompt window (Start menu/Run/type 'command' and hit enter) and type 'ipconfig /all' and hit enter. Look through the listing for IP Address usually under Local Area Connection. You can often times test access to the webcamXP server accross the local network by using this address in your internet browser: <http://192.168.????:8080/> where the ??? are usually assigned by the router or set when you configure a static address. Whether this works or not can depend on your router configuration so is not guaranteed to work with all routers all the time.

13. Your firewall software will also need to be configured to allow traffic through port 8080. To determine which firewall you're using, open the Control Panel (Start Menu/Control panel (classic view recommended)) and look for the Security Center applet. Open the Security Center then look at the section named Firewall (you need to click the down arrows next to where it says On to see the information).



If you're using the Windows XP firewall, follow the instructions here:

<http://support.microsoft.com/kb/308127/en-us>

Zone Alarm, AVG and Symantec firewalls typically ask what you want to do when an application tries to get access to the internet or acts like a server, you should select the option which allows for traffic. For other firewalls, see your documentation or the manufacturers website.

If you are unsure about your firewall settings, you could disable the firewall briefly for testing but be forewarned that there are network aware worms/viruses that look for unprotected ports to infect (some claim within 4 minutes). Be sure to run an anti-virus full system scan after you do this to be on the safe side.

14. If you still can't connect to the webcamXP server then try posting to the webcamXP forum at [http://www.darkwet.net/darkboard2/forum.asp?FORUM\\_ID=60](http://www.darkwet.net/darkboard2/forum.asp?FORUM_ID=60). Be sure to provide information about your firewall and router and the steps you already took. The more you say the better the chance someone can assist you.